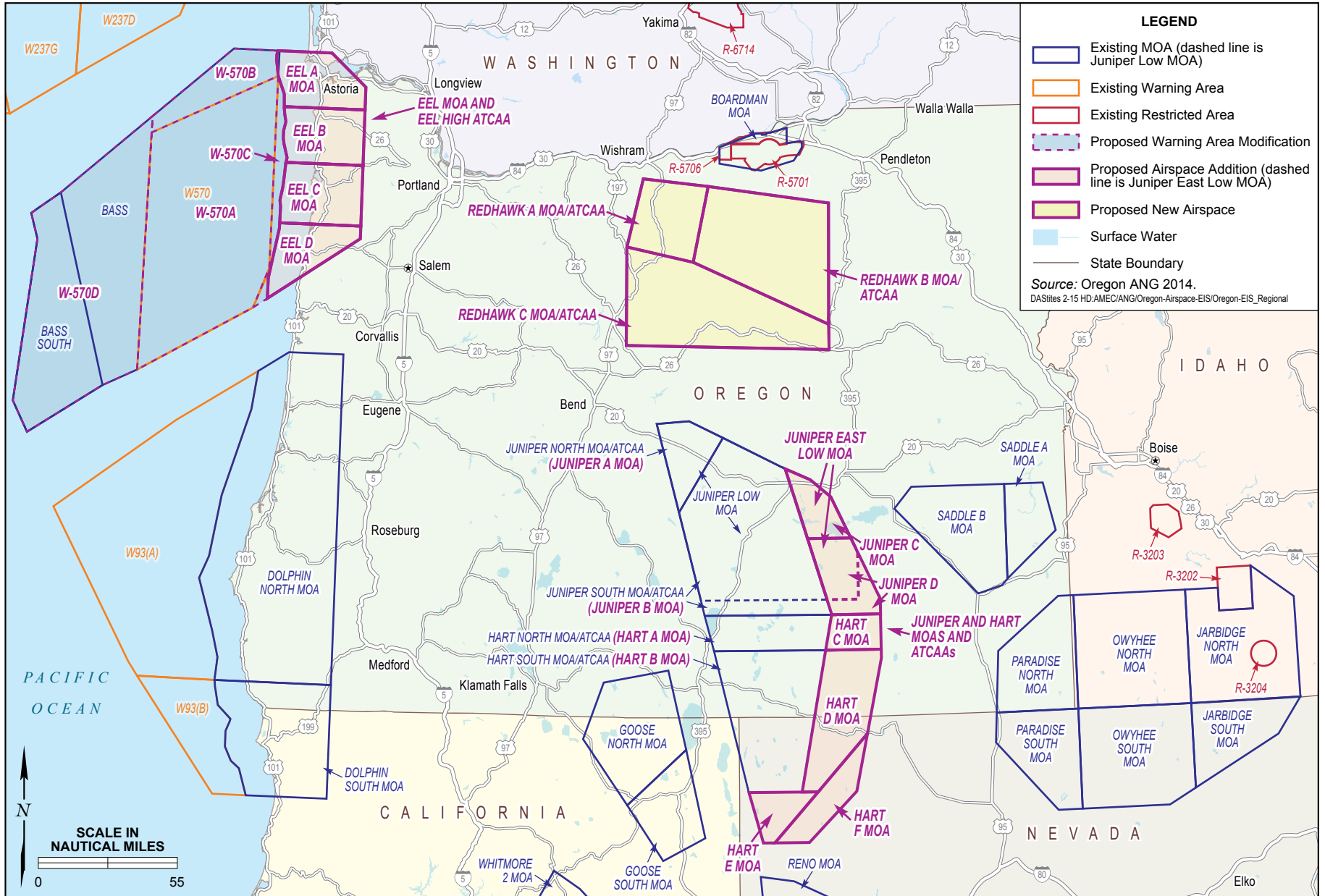




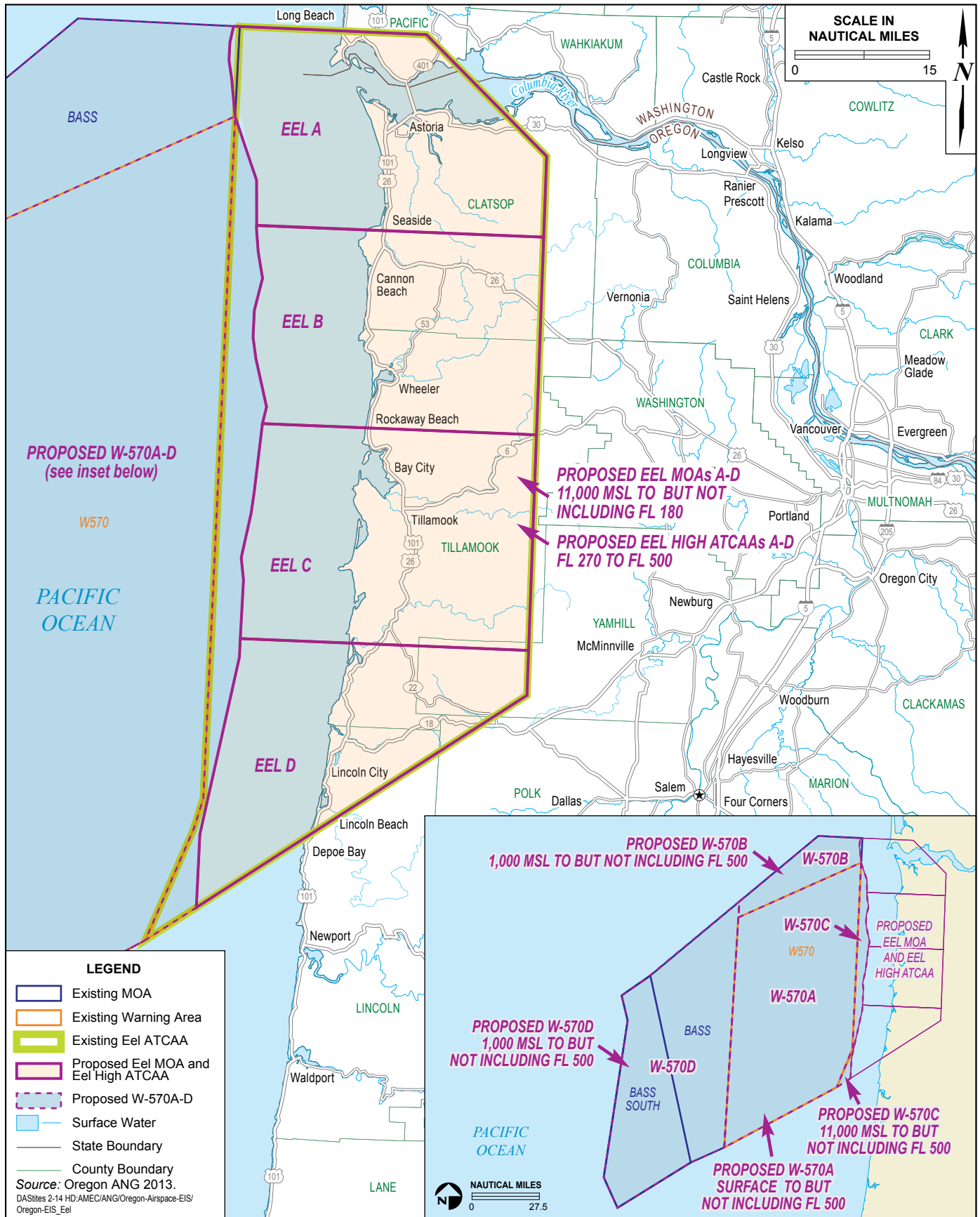
No warranty is made by the State/Territory/National Guard Bureau as to the accuracy, reliability, or completeness of these data for individual use or aggregate use with other data. This map is a "living document," in that it is intended to change as new data become available and are incorporated into the Enterprise GIS database.



EIS

**Regional Location Map
 Proposed Airspace Establishment and Modification**

**FIGURE
 1-1**



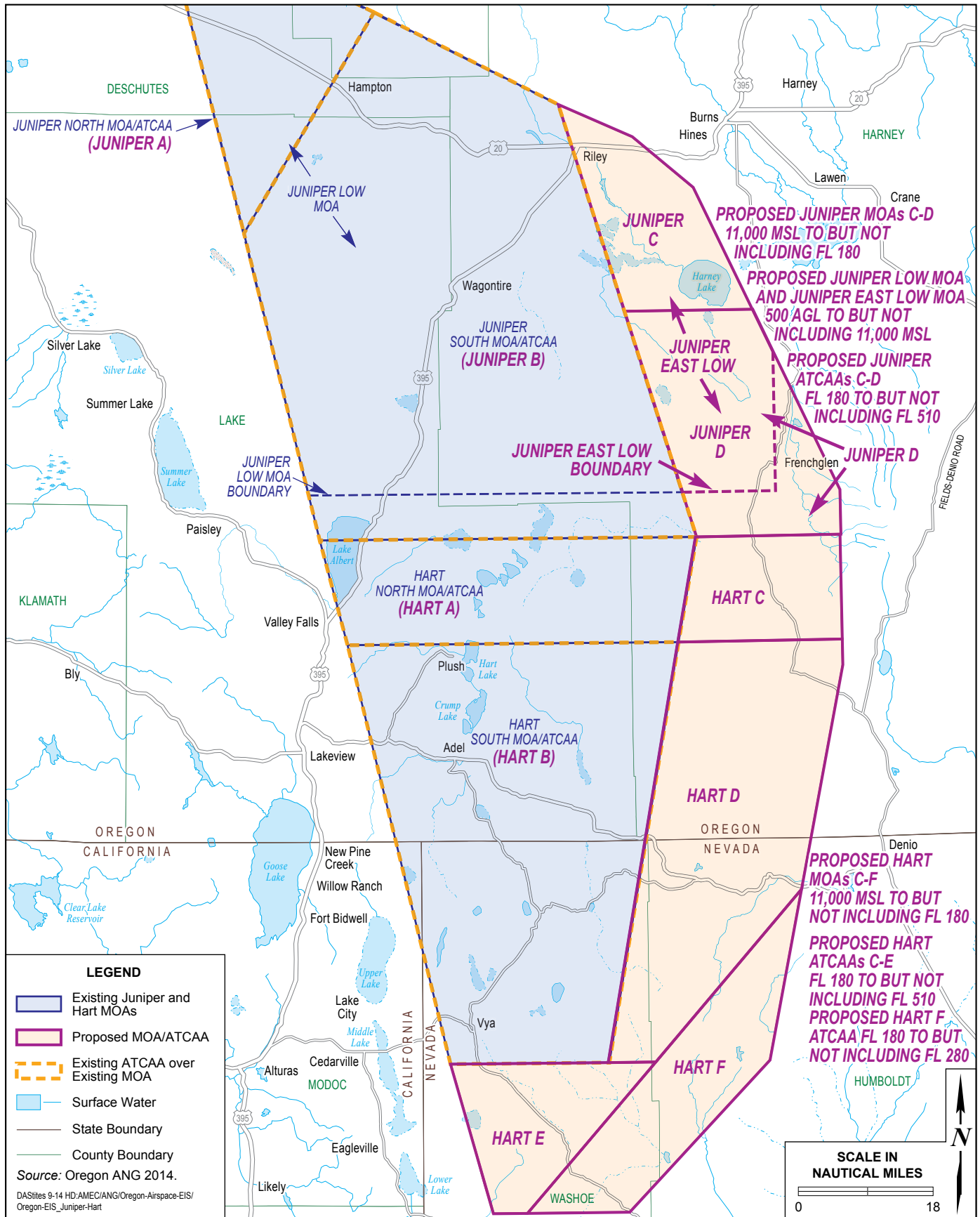
EIS

Proposed Eel ATCAA and W-570 Modifications

FIGURE 2-1



No warranty is made by the State/Territory/National Guard Bureau as to the accuracy, reliability, or completeness of these data for individual use or aggregate use with other data. This map is a "living document," in that it is intended to change as new data become available and are incorporated into the Enterprise GIS database.



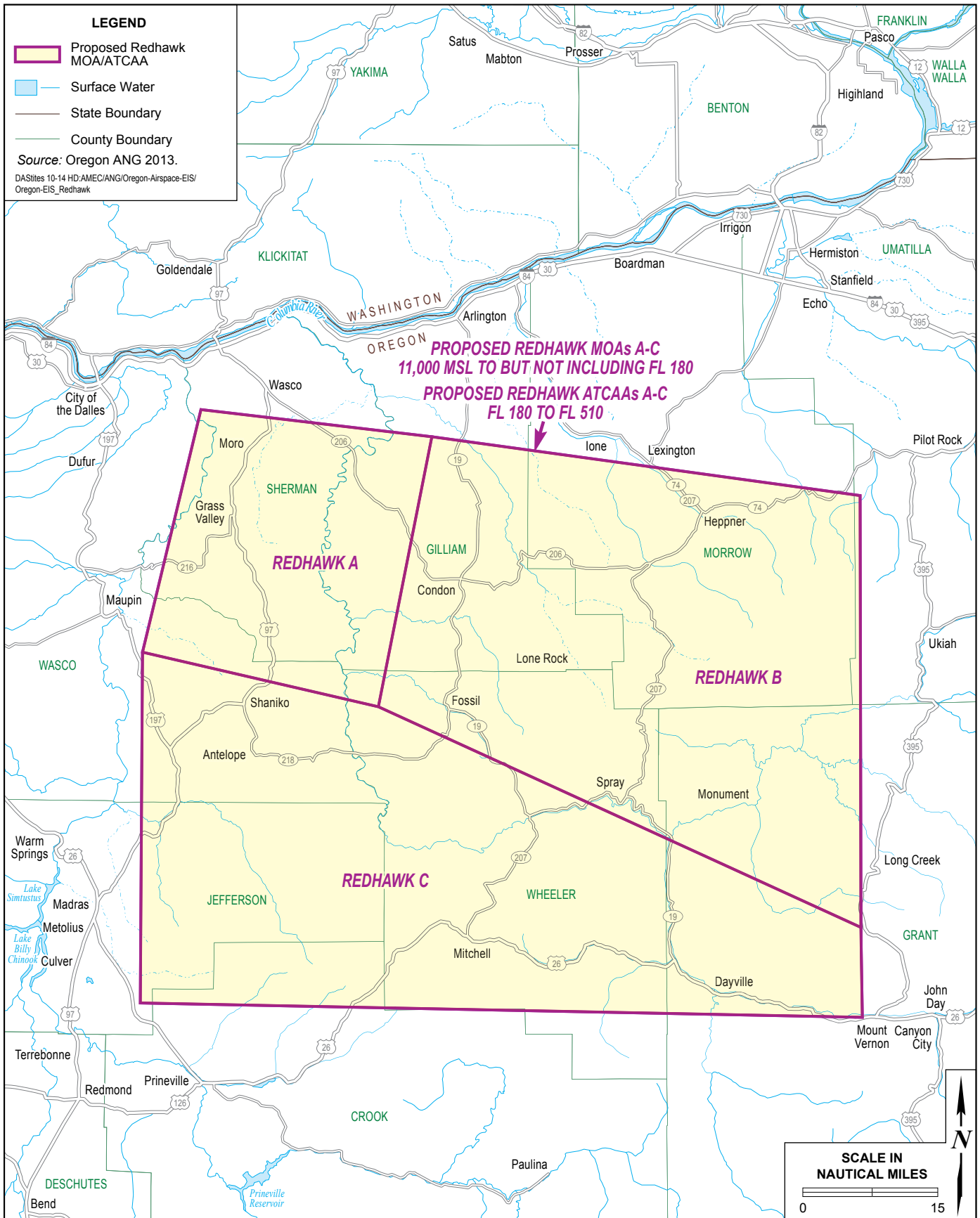
EIS

Proposed Juniper and Hart MOAs

FIGURE 2-2



No warranty is made by the State/Territory/National Guard Bureau as to the accuracy, reliability, or completeness of these data for individual use or aggregate use with other data. This map is a "living document," in that it is intended to change as new data become available and are incorporated into the Enterprise GIS database.



EIS

Proposed Redhawk MOAs and ATCAAs

FIGURE
2-3



No warranty is made by the State/Territory/National Guard Bureau as to the accuracy, reliability, or completeness of these data for individual use or aggregate use with other data. This map is a "living document," in that it is intended to change as new data become available and are incorporated into the Enterprise GIS database.